



SUN MAGNETIC SYS-TECH CO., LTD.

Office:

No. 2, Nan Yao Cun, Yong Ding Men Wai, Feng Tai District, Beijing P. R. China
Post code: 100079
Tel: +86 10 8768 4216 Fax: +86 10 8768 4218
E-mail: sunmag@sunmagnetic.com

Plant:

YongQing Gas Industrialized Garden, LangFang Developing Zone, HeBei, P.R. China
Post Code: 065600
E-mail: smst@public3.bta.net.cn
Web Site: www.sunmagnetic.com

Magnetic Filter Bars

Magnetic filter bars are the main part of different magnetic grate separators. They can effectively remove ferrous chips and metal particles from loosely packed, free flowing materials.

Technical data

1. Standard bars is 25mm in diameter and any length per customer's request, the Max length up to 2500mm, square or other magnetic tubes with different shapes and dimensions are also available.
2. Sunmag magnetic filter bar usually made of seamless 304 stainless steel tubes or 316 stainless steel tubes, can be fine polished and full welded to meet food grade or pharmacy application.
3. Usual max working temperature is 80°C, we can offer up to 350°C to meet your special applications.
4. Various ends-nail head, thread hole, double screw bolt and other kind ends are also available.
5. By using ferrite magnets or different grade rare earth magnets, different magnetic strength are available to meet every customer's requirement, the highest magnetic strength of Diameter 25mm tubes can achieve 13,000GS(1.3T).



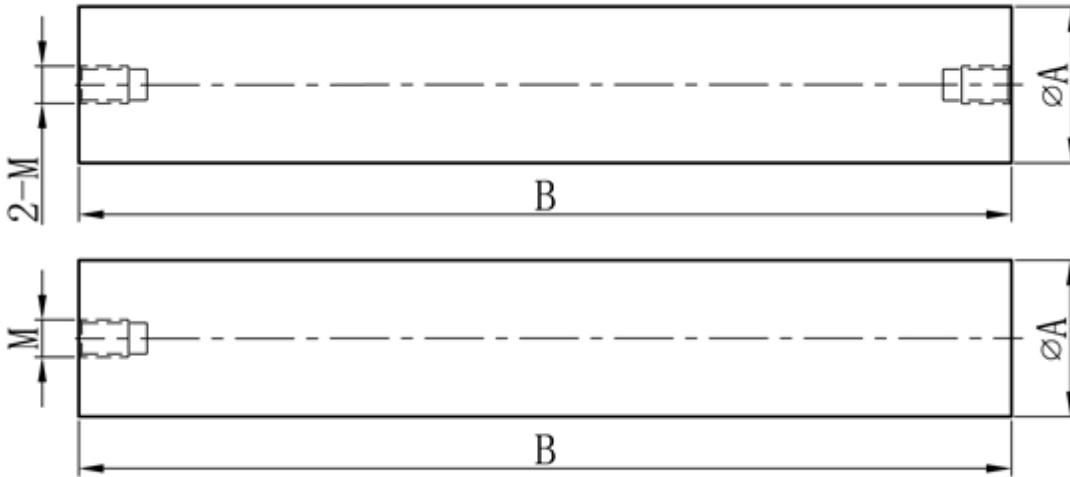


SUN MAGNETIC SYS-TECH CO., LTD.

Office:
 No. 2, Nan Yao Cun, Yong Ding Men Wai, Feng Tai District, Beijing P. R. China
 Post code: 100079
 Tel: +86 10 8768 4216 Fax: +86 10 8768 4218
 E-mail: sunmag@sunmagnetic.com

Plant:
 YongQing Gas Industrialized Garden, LangFang Developing Zone, HeBei, P.R. China
 Post Code: 065600
 E-mail: smst@public3.bta.net.cn
 Web Site: www.sunmagnetic.com

Magnetic Filter Bars



Magnetic Filter Bars				
ITEM No. (Ferrite series)	ITEM No. (NdFeB series)	A (mm)	B(mm)	No. of holes
SMYF2A0001	SMYF5A0001	25	100	2-M6
SMYF2A0002	SMYF5A0002	25	150	2-M6
SMYF2A0003	SMYF5A0003	25	200	2-M6
SMYF2A0004	SMYF5A0004	25	250	2-M6
SMYF2A0005	SMYF5A0005	25	300	2-M6
SMYF2A0026	SMYF5A0026	25	350	2-M8
SMYF2A0027	SMYF5A0027	25	400	2-M8
SMYF2A0028	SMYF5A0028	25	450	2-M8
SMYF2A0017	SMYF5A0017	25	500	2-M8
SMYF2A0029	SMYF5A0029	25	550	2-M12
SMYF2A0030	SMYF5A0030	25	600	2-M12
SMYF2A0031	SMYF5A0031	25	750	2-M12
SMYF2A0032	SMYF5A0032	25	800	2-M12
SMYF2A0033	SMYF5A0033	25	1000	2-M12

Other dimensions could be provided on request.



SUN MAGNETIC SYS-TECH CO., LTD.

Office:
 No. 2, Nan Yao Cun, Yong Ding Men Wai, Feng Tai District, Beijing P. R. China
 Post code: 100079
 Tel: +86 10 8768 4216 Fax: +86 10 8768 4218
 E-mail: sunmag@sunmagnetic.com

Plant:
 YongQing Gas Industrialized Garden, LangFang Developing Zone, HeBei, P.R. China
 Post Code: 065600
 E-mail: smst@public3.bta.net.cn
 Web Site: www.sunmagnetic.com

Magnetic Filter Bars

The following is the relationship between diameter, magnetic strength and maximum operation temperature for reference.

Part No	0.25T	0.5T	0.7T	0.9T	1T	1.1T	1.3T
Ø10	√EH	√E	-	-	-	-	-
Ø16	√EH	√EH	√EH	√H	√H	-	-
Ø19	√EH	√EH	√EH	√H	√H	-	-
Ø20	√EH	√EH	√EH	√SH	√H	√H	-
Ø22	√EH	√EH	√EH	√EH	√EH	√H	-
Ø23	√EH	√EH	√EH	√EH	√EH	√H	-
Ø25	√EH	√EH	√EH	√EH	√EH	√EH	√H
Ø28	√EH	√EH	√EH	√EH	√EH	√EH	√H
Ø32	√EH	√EH	√EH	√EH	√EH	√EH	√H
Ø38	√EH	√EH	√EH	√EH	√UH	√H	√H
Ø50	√EH	√EH	√EH	√UH	√H	√H	√H
Ø76	√EH	√EH	√EH	√H	√H	√H	√H
Ø100	√EH	√EH	√H	√H	-	-	√H

Remarks:

1."√"^m means it can be manufactured on the condition of the diameters listed in the table."- " means can not be manufactured.

2.The magnetic bars which their diameter are less than 38mm often use Smco Magnet in EH temprature interval.

But if their diameter are more than 38mm will not consider using Smco Magnet.

3. The related Max working temperature from different series.

H series: 120 °C

SH series: 150 °C

UH series: 180 °C

EH series: 350 °C

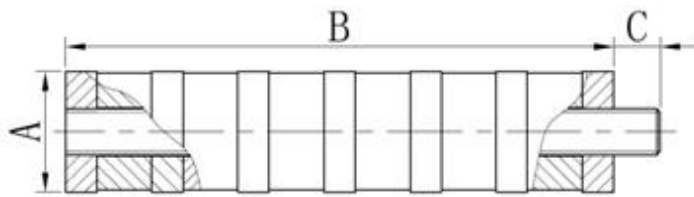


SUN MAGNETIC SYS-TECH CO., LTD.

Office:
 No. 2, Nan Yao Cun, Yong Ding Men Wai, Feng Tai District, Beijing P. R. China
 Post code: 100079
 Tel: +86 10 8768 4216 Fax: +86 10 8768 4218
 E-mail: sunmag@sunmagnetic.com

Plant:
 YongQing Gas Industrialized Garden, LangFang Developing Zone, HeBei, P.R. China
 Post Code: 065600
 E-mail: smst@public3.bta.net.cn
 Web Site: www.sunmagnetic.com

Candle Shape Magnetic Filter Bars



Candle Shape Magnetic Filter Bars				
ITEM No.	A (mm)	B (mm)	C (mm)	Threaded End
SMYF5A0061	Φ15.5	70	6	M6
SMYF5A0062	Φ15.5	106	6	M6
SMYF5A0064	Φ10	76	8	M4



■ Handle ball and other dimensions could be provided on request.



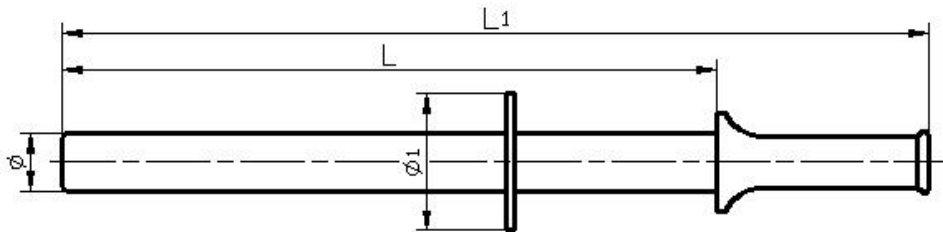
SUN MAGNETIC SYS-TECH CO., LTD.

Office:
 No. 2, Nan Yao Cun, Yong Ding Men Wai, Feng Tai District, Beijing P. R. China
 Post code: 100079
 Tel: +86 10 8768 4216 Fax: +86 10 8768 4218
 E-mail: sunmag@sunmagnetic.com

Plant:
 YongQing Gas Industrialized Garden, LangFang Developing Zone, HeBei, P.R. China
 Post Code: 065600
 E-mail: smst@public3.bta.net.cn
 Web Site: www.sunmagnetic.com

Pull-and-Push Magnetic Attractor

- Safely and easily clear iron and steel chips, spilt components, swarf, nuts, nails etc;
- Quickly pick-up and move small parts;
- Quick release handle.



Pull-and-Push Magnetic Attractor						
ITEM No.	Dimension (mm)	The detailed dimension (mm)				The Max. Working Temp. (°C)
		ϕ	L	ϕ_1	L1	
SMYF5A0080	22×250	22	250	52	330	<80
SMYF5A0081	22×270	22	270	52	340	<80
SMYF5A0082	22×350	22	350	52	430	<80
SMYF5A0083	22×450	22	450	52	530	<80
SMYF5A0084	25×350	25	350	55	430	<80
SMYF5A0085	25×400	25	400	55	480	<80
SMYF5A0086	25×500	25	500	55	580	<80
SMYF5A0087	32×250	32	250	62	330	<80
SMYF5A0088	32×350	32	350	62	430	<80
SMYF5A0089	32×400	32	400	62	480	<80
SMYF5A0090	32×500	32	500	62	580	<80

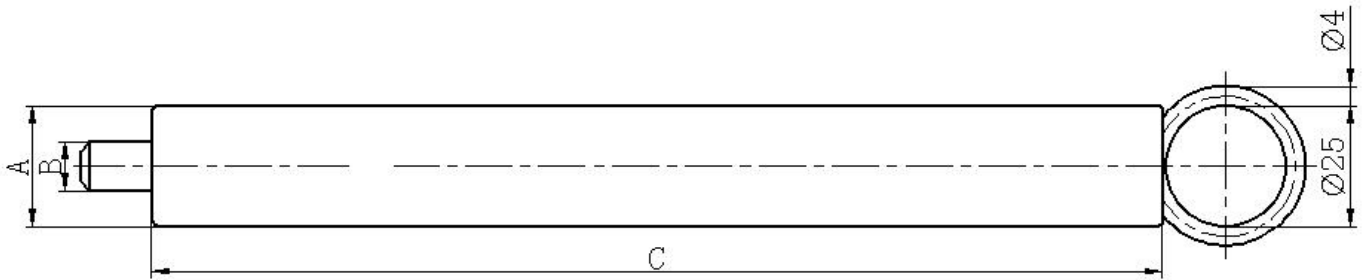
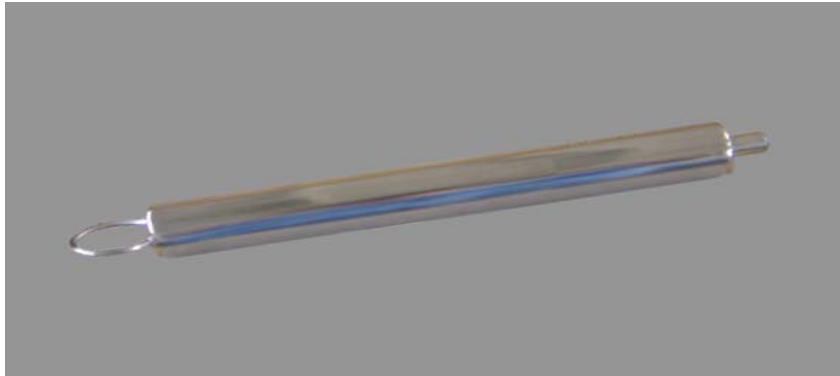


SUN MAGNETIC SYS-TECH CO., LTD.

Office:
 No. 2, Nan Yao Cun, Yong Ding Men Wai, Feng Tai District, Beijing P. R. China
 Post code: 100079
 Tel: +86 10 8768 4216 Fax: +86 10 8768 4218
 E-mail: sunmag@sunmagnetic.com

Plant:
 YongQing Gas Industrialized Garden, LangFang Developing Zone, HeBei, P.R. China
 Post Code: 065600
 E-mail: smst@public3.bta.net.cn
 Web Site: www.sunmagnetic.com

Magnetic Filter Bars with Ring



Magnetic Filter Bars with Ring					
ITEM No.	Dimension (mm)	The detailed dimensions (mm)			The Max. Working Temp. (°C)
		A	B	C	
SMYF5AE001	∅ 25×210	∅ 25	∅ 10	210	<80
SMYF5AE002	∅ 25×250	∅ 25	∅ 10	250	<80
SMYF5AE003	∅ 25×550	∅ 25	∅ 10	550	<80
SMYF5AE004	∅ 25×750	∅ 25	∅ 10	750	<80